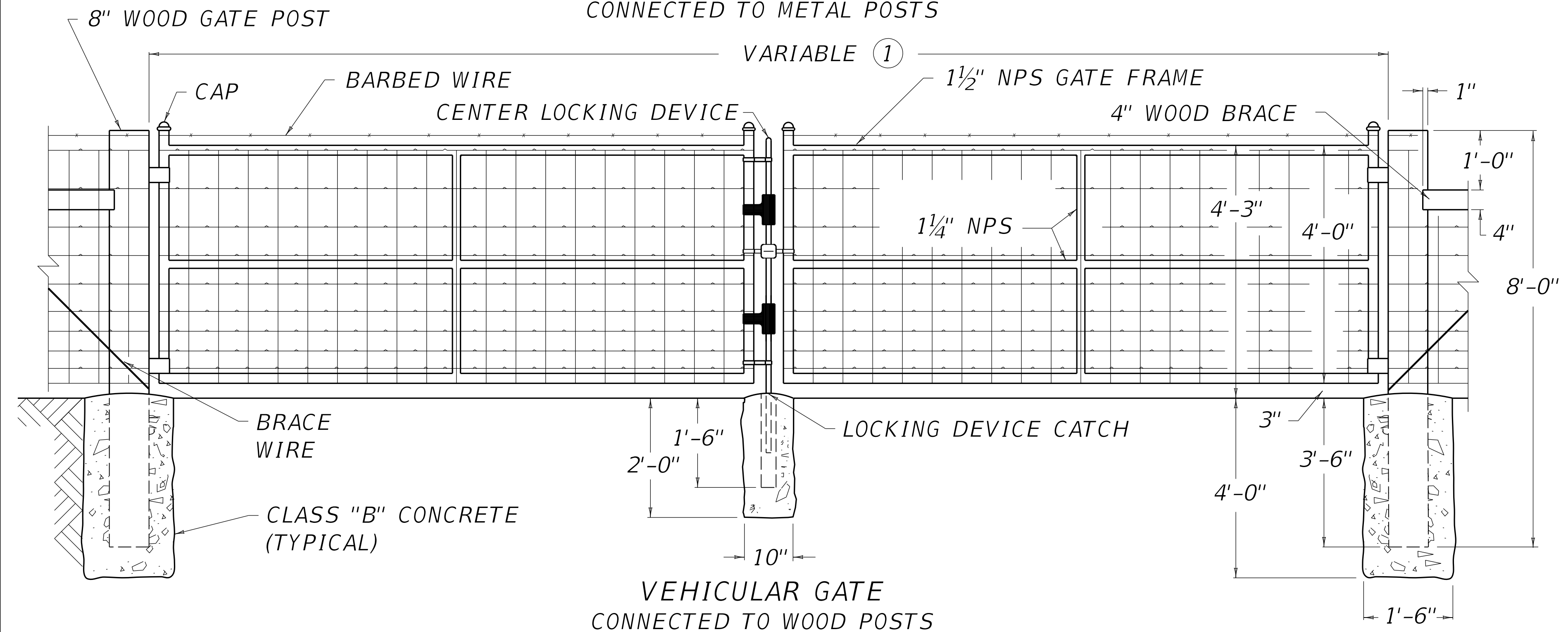
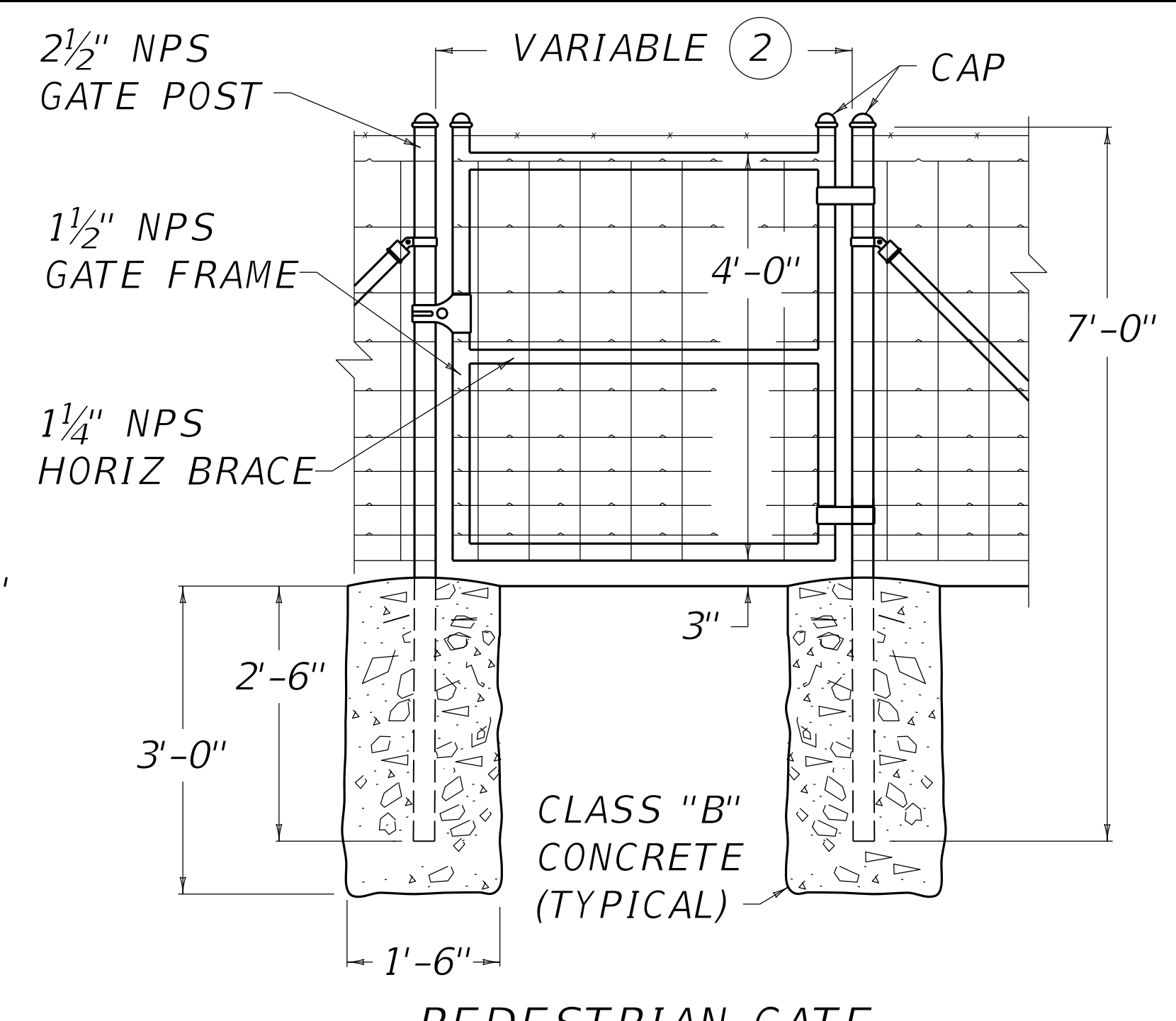


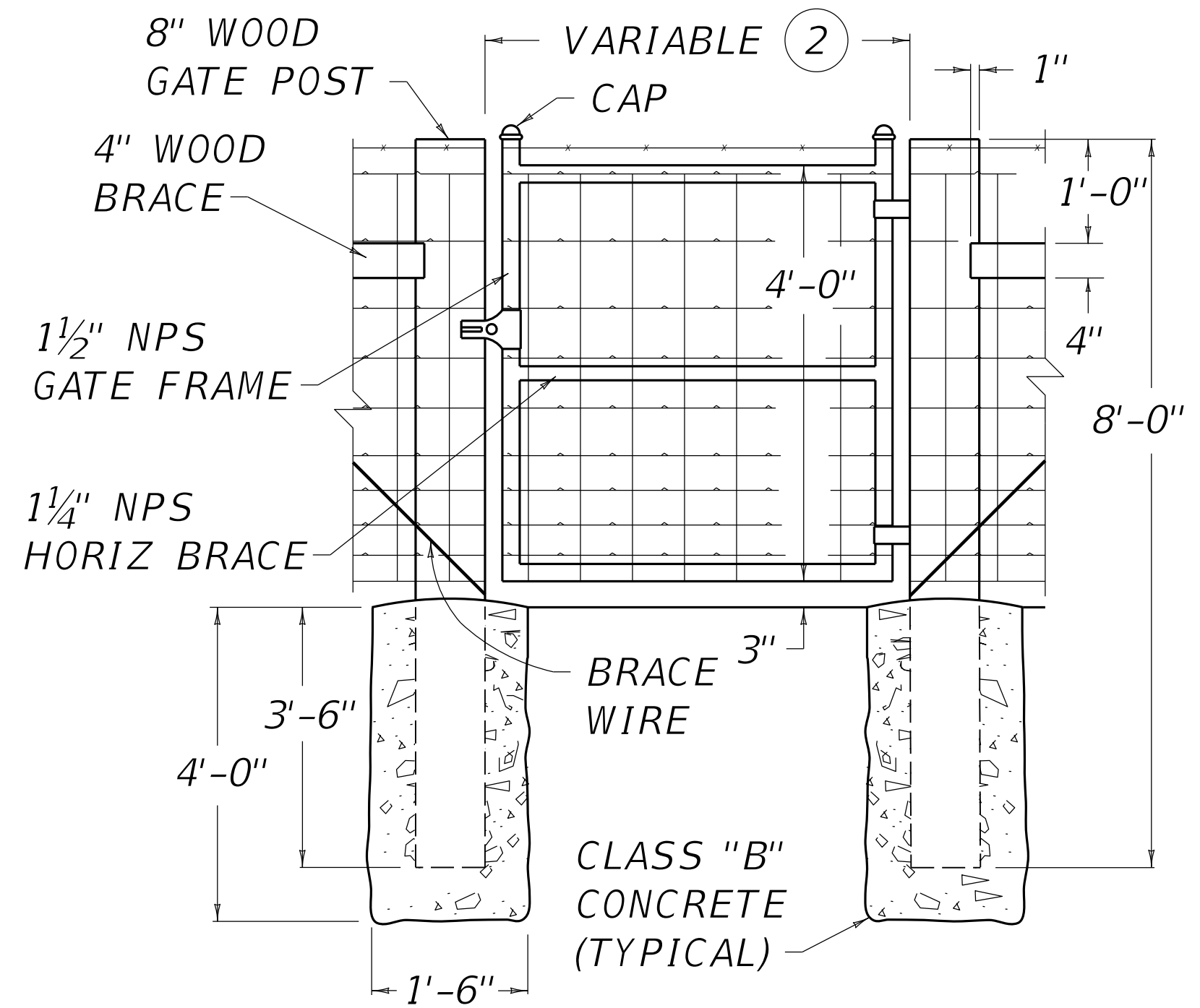
VEHICULAR GATE  
CONNECTED TO METAL POSTS



VEHICULAR GATE  
CONNECTED TO WOOD POSTS



PEDESTRIAN GATE  
CONNECTED TO METAL POSTS



PEDESTRIAN GATE  
CONNECTED TO WOOD POSTS

~ NOTES ~

BID ITEMS AND UNIT TO BID  
SINGLE VEHICULAR WOVEN WIRE GATE EACH  
OR  
DOUBLE VEHICULAR WOVEN WIRE GATE EACH  
OR  
PEDESTRIAN WOVEN WIRE GATE EACH  
CONCRETE-CLASS B CUYD

- ① 6' TO 13' WIDTH FOR SINGLE GATE AND 12' TO 26' WIDTH FOR DOUBLE GATE.  
② 4' TO 6' WIDTH

3. FABRIC TIE WIRES SHALL BE SPACED 1'-0" ON CENTERS.  
4. THE CONTRACTOR IS NOT TO ORDER GATES UNTIL THEIR NECESSITY AND LOCATION HAVE BEEN CERTIFIED BY THE ENGINEER.  
5. WOVEN-WIRE FABRIC USED IN THE GATES SHALL EITHER BE ALUMINUM-COATED STEEL NO. 1047-6-9 OR ZINC-COATED STEEL NO. 1047-6-9.  
6. NPS = NOMINAL PIPE SIZE - ASTM F1083 AND F1043 (HEAVY INDUSTRIAL FENCE) SHALL GOVERN.  
7. GATES SHALL HAVE HEAVY PRESSED STEEL CORNERS SECURELY RIVETED OR SHALL BE MACHINE NOTCHED AND ELECTRICALLY WELDED SO AS TO BE RIGID AND WATER TIGHT. ALL WELDED JOINTS SHALL BE CLEANED AND PAINTED WITH TWO (2) COATS OF ALUMINUM PAINT.



COMMONWEALTH OF KENTUCKY  
DEPARTMENT OF HIGHWAYS



GATES

WOVEN WIRE GATES

STANDARD DRAWING NUMBER  
RFG-001-07

REVISION DATE: 12/01/2015  
REVISION NUMBER: 0

SUBMITTED 12-01-2015  
DATE

DIVISION DIRECTOR  
APPROVED 12-01-2015  
DATE

STATE HIGHWAY ENGINEER

FENCES & GATES